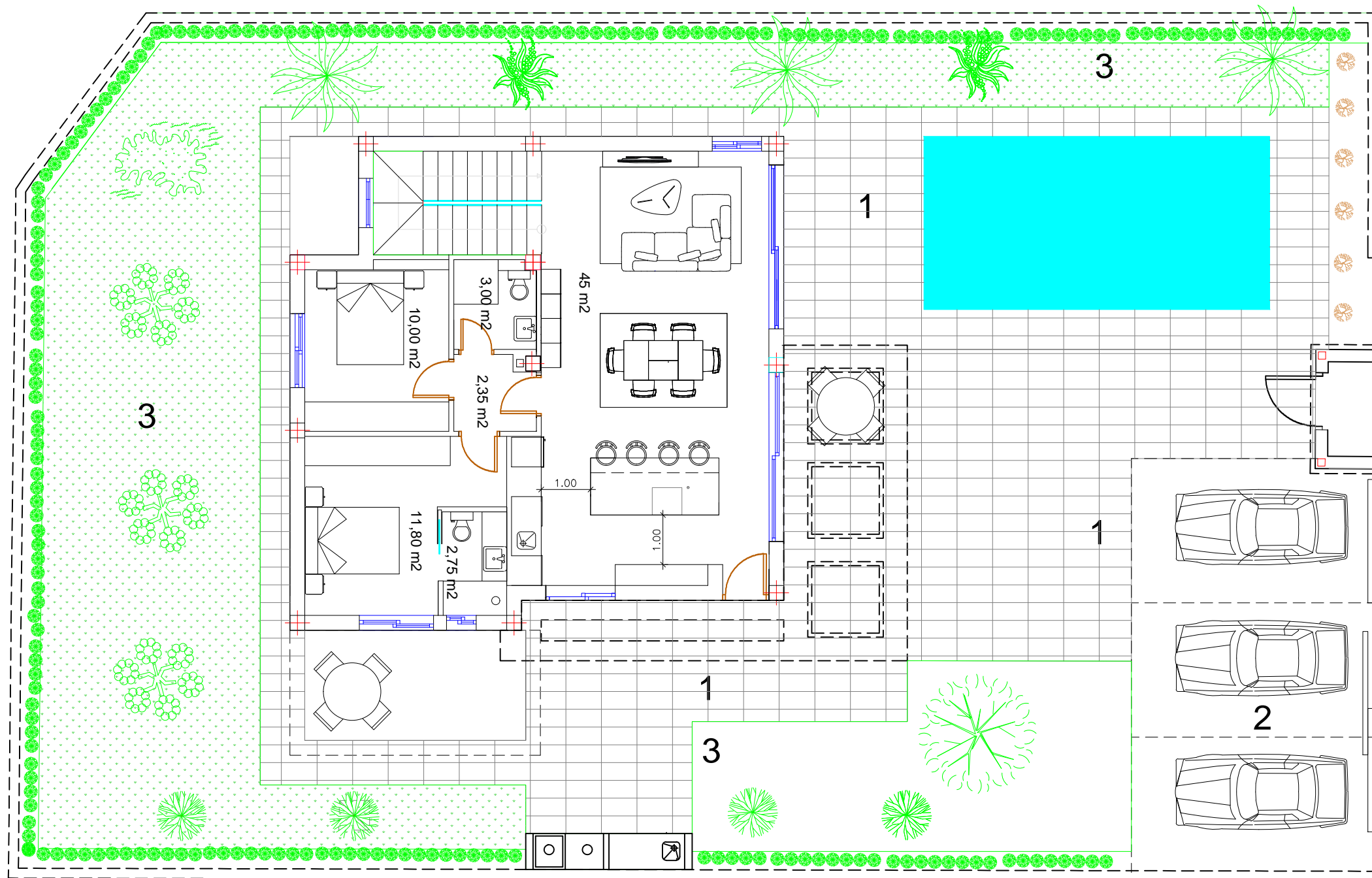









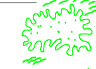




VIVIENDA Y PARCELA N° 7

PLANTA BAJA MODELO MALENA



-  **citricos**
-  **olivo**
-  **jade aeorium calandros**
-  **tirsiflora espinas de**
-  **cristo**
-  **seto**
-  **cipres**
-  **cicas**
-  **chamero humilis o excelsa**
-  **almez**
-  **cocotero**
-  **esterlicias**

Superficies utiles

| | |
|-----------------------------|-----------------|
| Salon comedor cocina | 49,80 m2 |
| Dormitorio 1 | 10,00 m2 |
| Dormitorio 2 | 11,80 m2 |
| Bano 1 | 3,15 m2 |
| Bano | 2,75 m2 |
| Vestibulo | 2,35 m2 |
| TOTAL PLANTA BAJA | 79,85 m2 |
| Dormitorio 3 | 12,12 m2 |
| Bano 3 | 5,30 m2 |
| Escalera y vestibulo | 10,55m2 |
| TOTAL PLANTA PRIMERA | 27,97 m2 |

SUPERFICIES

| | |
|--------------------------------------|----------|
| SUPERFICIE CONSTRUIDA PLANTA BAJA | 93,45 m2 |
| SUPERFICIE CONSTRUIDA PLANTA PRIMERA | 35,00 m2 |
| SUPERFICIE CONSTRUIDA PLANTA SOTANO | 47,30 m2 |
| SUPERFICIE PATIO INGLES | 12,80m2 |
| SUPERFICIE PORTAL | 3,35 m2 |
| SUPERFICIE PORCHE | 22,75 m2 |
| SUPERFICIE TERRAZA SOLARIUM | 57,00 m2 |

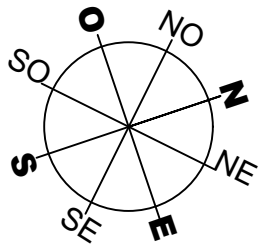
Superficies útiles Sotano

| | |
|----------------------------|-----------------|
| Salon multiusos | 38,60 m2 |
| patio ingles | 10,00 m2 |
| TOTAL PLANTA SOTANO | 48,60 m2 |

| | |
|-----------------------|-----------|
| TERRAZAS PAVIMENTADAS | 154,00 m2 |
| SUPERFICIE VEHICULOS | 42,30 m2 |
| SUPERFICIE JARDIN | 167,25 m2 |
| SUPERFICIE PISCINA | 18,00 m2 |

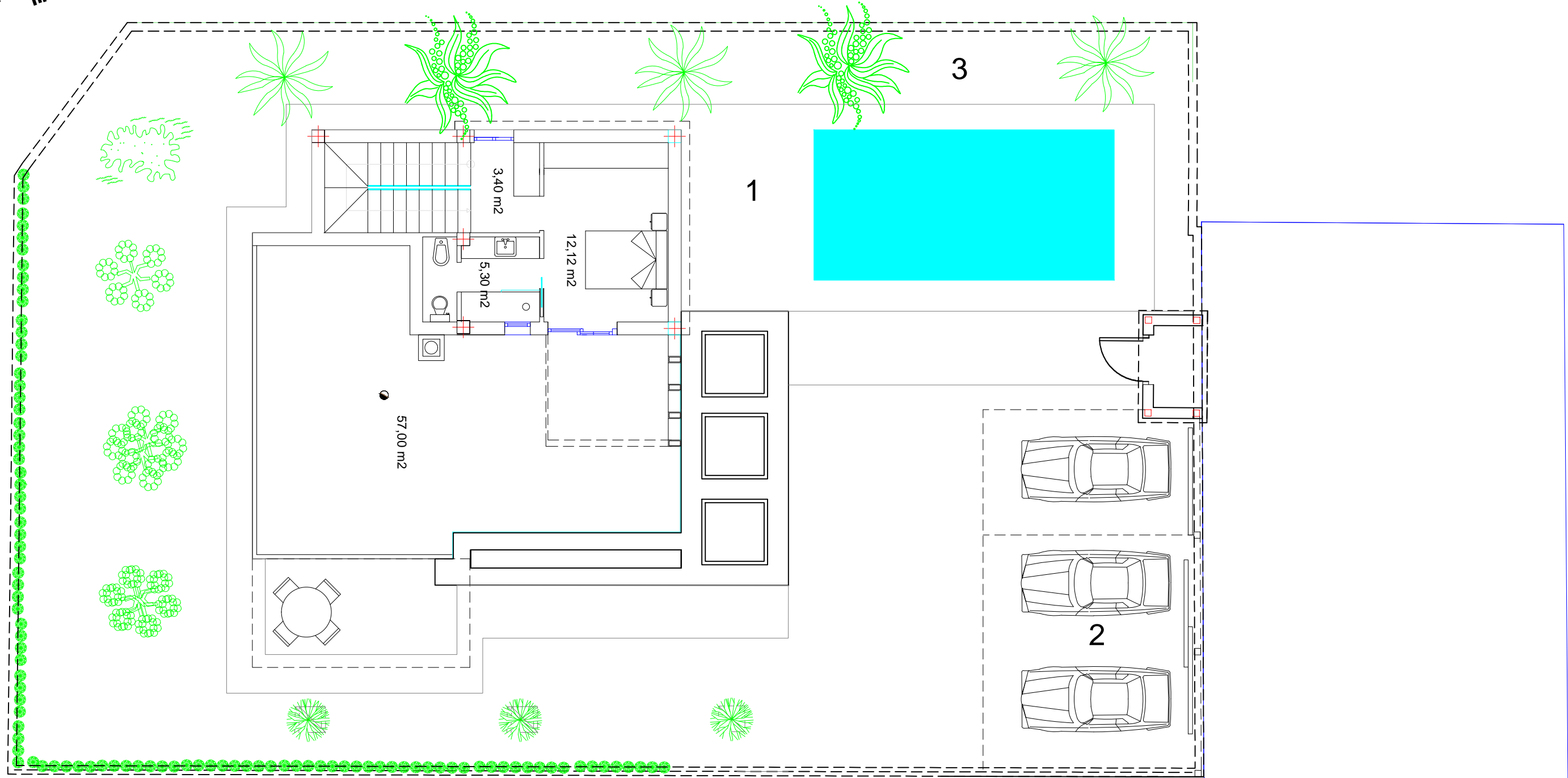
Zona 1 pavimentadas porcelánico antideslizante
 Zona 2 pavimento continuo de hormigon tratado
 Zona 3 plantaciones y cespced artificial
 escala 1/100

SUPERFICIES PARCELA 485 m2



VIVIENDA Y PARCELA N° 7

PLANTA PRIMERA MODELO MALENA



Superficies utiles

| | |
|-----------------------------|-----------------|
| Salon comedor cocina | 49,80 m2 |
| Dormitorio 1 | 10,00 m2 |
| Dormitorio 2 | 11,80 m2 |
| Bano 1 | 3,15 m2 |
| Bano | 2,75 m2 |
| Vestibulo | 2,35 m2 |
| TOTAL PLANTA BAJA | 79,85 m2 |
| Dormitorio 3 | 12,12 m2 |
| Bano 3 | 5,30 m2 |
| Escalera y vestibulo | 10,55m2 |
| TOTAL PLANTA PRIMERA | 27,97 m2 |

SUPERFICIES

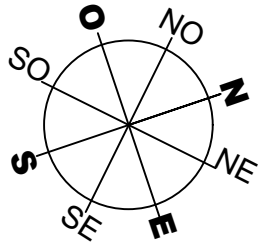
| | |
|--------------------------------------|----------|
| SUPERFICIE CONSTRUIDA PLANTA BAJA | 93,45 m2 |
| SUPERFICIE CONSTRUIDA PLANTA PRIMERA | 35,00 m2 |
| SUPERFICIE CONSTRUIDA PLANTA SOTANO | 47,30 m2 |
| SUPERFICIE PATIO INGLES | 12,80m2 |
| SUPERFICIE PORTAL | 3,35 m2 |
| SUPERFICIE PORCHE | 22,75 m2 |
| SUPERFICIE TERRAZA SOLARIUM | 57,00 m2 |

Superficies útiles Sotano

| | |
|----------------------------|-----------------|
| Salon multiusos | 38,60 m2 |
| patio ingles | 10,00 m2 |
| TOTAL PLANTA SOTANO | 48,60 m2 |

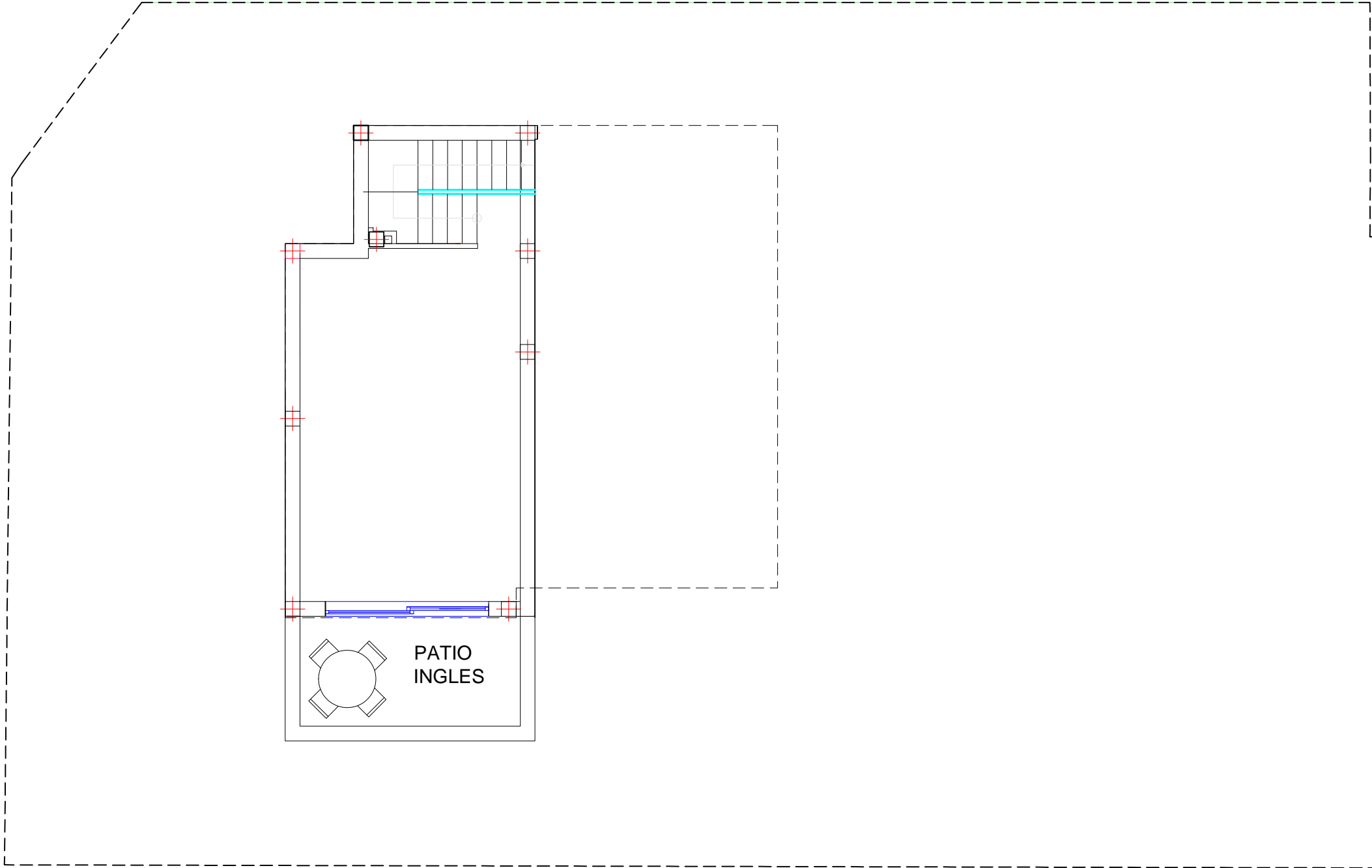
escala 1/100















SUPERFICIES PARCELA 485 m2



VIVIENDA Y PARCELA N° 7

PLANTA SOTANO MODELO MALENA



-  **citricos**
-  **olivo**
-  **jade**
-  **aeonium**
-  **calandras**
-  **tirsoflora**
-  **espinas de cristal**
-  **seto**
-  **cipres**
-  **cicas**
-  **chamero humilis o excelsa**
-  **almez**
-  **cocotero**
-  **esterlicias**

Superficies utiles

| | |
|-----------------------------|-----------------|
| Salon comedor cocina | 49,80 m2 |
| Dormitorio 1 | 10,00 m2 |
| Dormitorio 2 | 11,80 m2 |
| Bano 1 | 3,15 m2 |
| Bano | 2,75 m2 |
| Vestibulo | 2,35 m2 |
| TOTAL PLANTA BAJA | 79,85 m2 |
| Dormitorio 3 | 12,12 m2 |
| Bano 3 | 5,30 m2 |
| Escalera y vestibulo | 10,55m2 |
| TOTAL PLANTA PRIMERA | 27,97 m2 |

SUPERFICIES

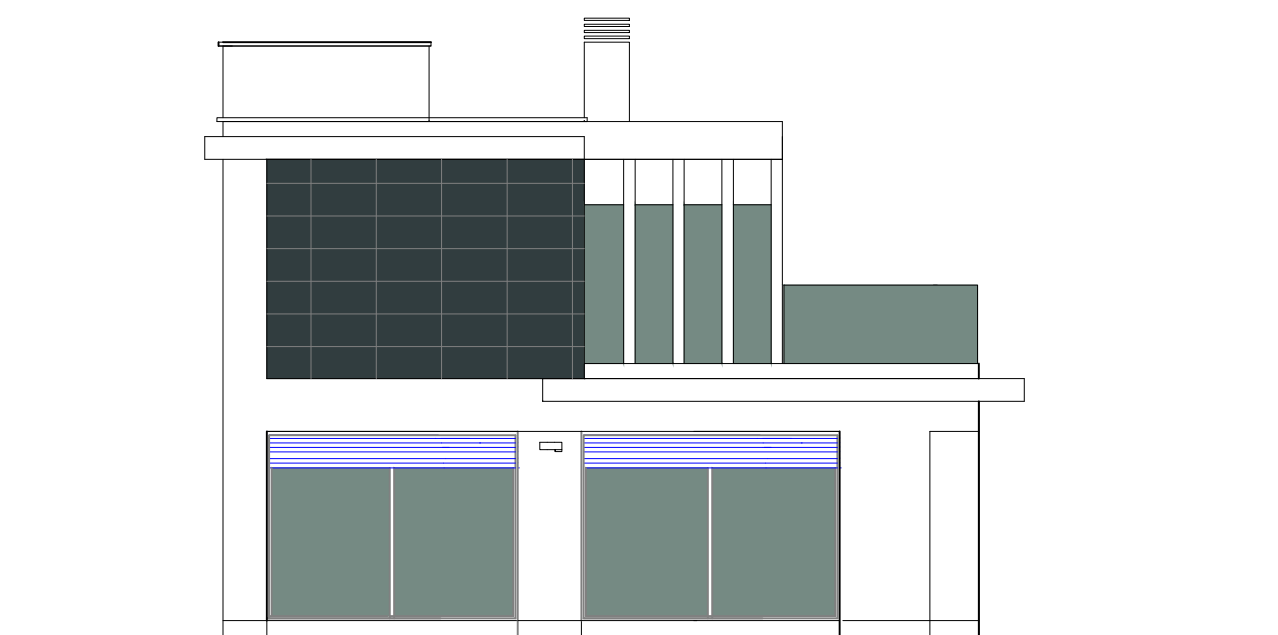
| | |
|--------------------------------------|----------|
| SUPERFICIE CONSTRUIDA PLANTA BAJA | 93,45 m2 |
| SUPERFICIE CONSTRUIDA PLANTA PRIMERA | 35,00 m2 |
| SUPERFICIE CONSTRUIDA PLANTA SOTANO | 47,30 m2 |
| SUPERFICIE PATIO INGLES | 12,80m2 |
| SUPERFICIE PORTAL | 3,35 m2 |
| SUPERFICIE PORCHE | 22,75 m2 |
| SUPERFICIE TERRAZA SOLARIUM | 57,00 m2 |

Superficies útiles Sotano

| | |
|----------------------------|-----------------|
| Salon multiusos | 38,60 m2 |
| patio ingles | 10,00 m2 |
| TOTAL PLANTA SOTANO | 48,60 m2 |

escala 1/100

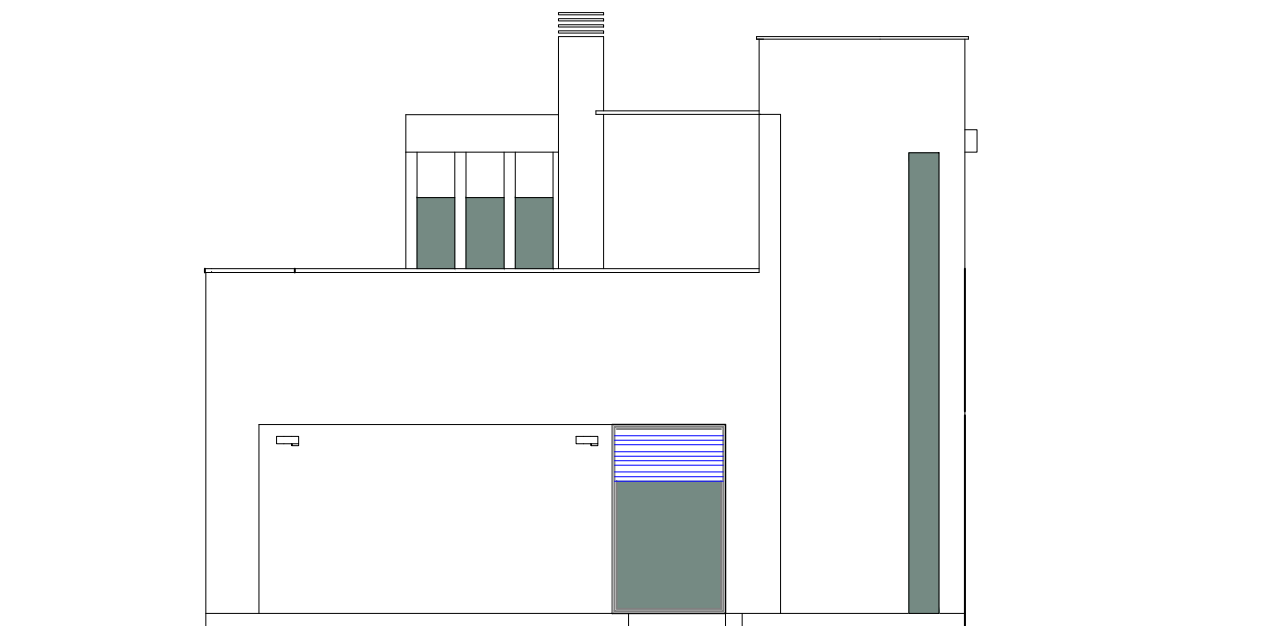
SUPERFICIES PARCELA 485 m2



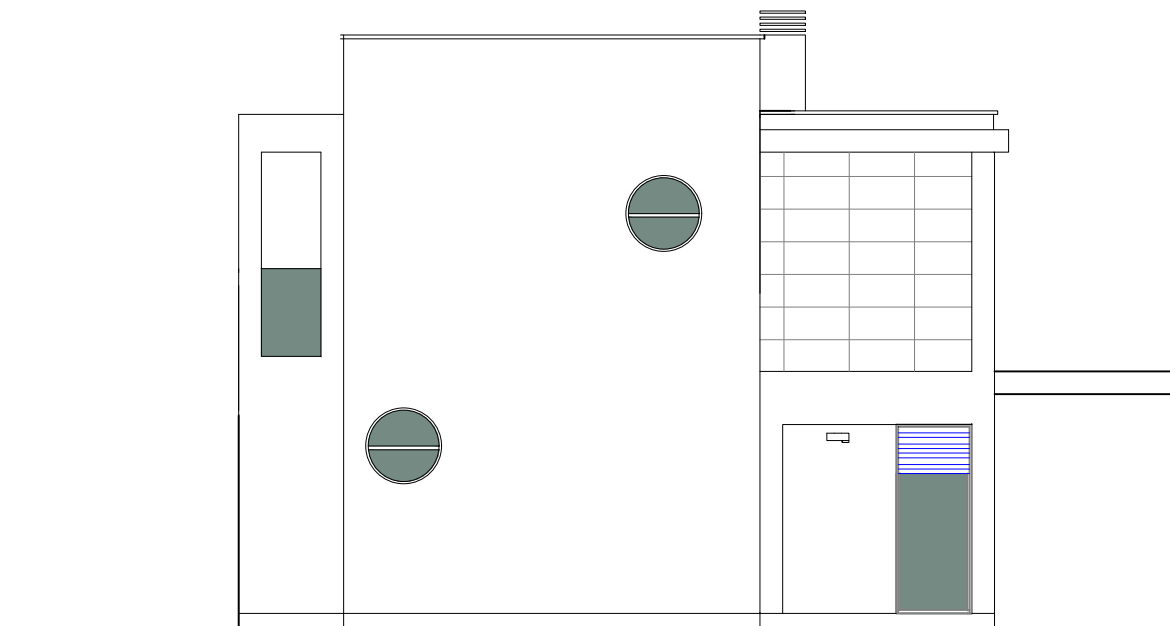
NORESTE



NOROESTE



SUROESTE



SURESTE

| | | | | | | |
|--|---|--|--|-----------------------------|-------------------------------|-------------------|
| PROYECTO BASICO Y DE EJECUCION DE UNA VIV UNIFAMILIAR vivienda en subparcela 7 | SITUACION: C/Santa Maria Nº 5 y C/ Quito Malena El Campello (Alicante) | LA PROPIEDAD: MEDITERRANEA DE SERVICIOS.Y ACTIVIDADES LABORALES S.L. | EL ARQUITECTO: Eduardo Miralles Palencia | PLANO DE FACHADAS | FECHA: OCTUBRE 2021 | PLANO 6 |
| | | | | | ESCALA: 1/100 | |